

# Santa Clarita Valley Garden Railroad Club



## NEWSLETTER

Santa Clarita, California

January, 2016

# January Meeting

Monday, January 25, 2016

6:30 pm Dinner—Meeting follows dinner after 7:00 pm

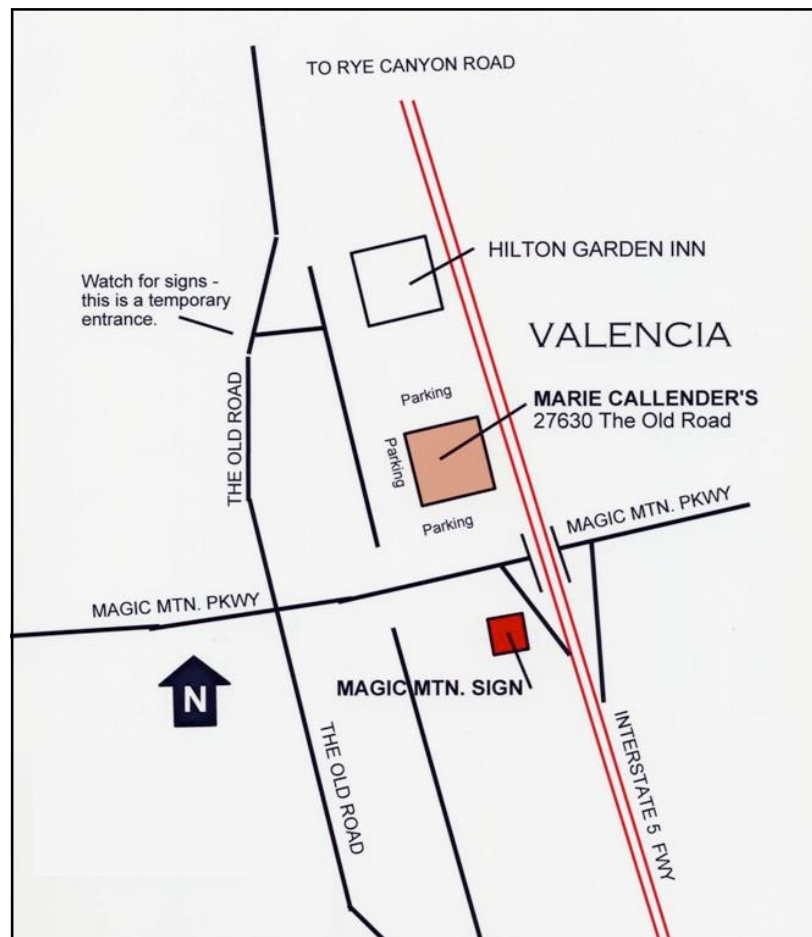
Marie Callender's Restaurant  
27630 The Old Road, Valencia, CA 91355  
661/259-4675

### DIRECTIONS

From the south, take Interstate 5 north and exit at **Magic Mountain Parkway**. At the bottom, turn left and continue to **The Old Road**. Turn right and look for the access road on the right. From there you will see the parking areas at Marie Callender's Restaurant.

### WE NEED YOUR INPUT

Carla has been hard at work to put a schedule of meetings and events for this coming year. Please read her suggestions in this newsletter and comment, add to it and/or volunteer to host a meeting.





# The Presidents Corner

By Grant Sweer

Greetings all,

I hope everyone had a great Holiday Season with friends, family and at least one train around a tree. In reflection, I realized that we did not have a train “play day” last year, though many attempts to do so did not pan out. This year my schedule will open a bit allowing me to host at least one this year. I will also keep looking for unusual locomotives of the past for our monthly meeting and included in the newsletters.

Carla has pulled together the Calendar of Events for this year, including the 32nd National Garden Railway Convention which will be held in the San Francisco Bay area. I attended the Denver convention last year and Jenny and I really enjoyed looking at all the great layouts there. If you have the means to go this year, I highly recommend it. Sign up for it as soon as possible since some activities will fill up. The bay area is as close as a national convention will be for us for some years. (In 2017 it will be in Tulsa, Oklahoma).

On Saturday, January 30th I am planning to go to the Great Train EXPO at the Orange County Convention Center and have room for two extra people and one small person to sit behind my seat. However, I will take the larger car if three full size people want to ride with me. The show starts about 10:00 AM, so I would leave my house around 8:00 AM. After the show we typically stop at Portillo’s for “Chicago style” hot dogs and Italian beefs. I would be happy to have you along, so please call me at 661-220-9831 if you would like to go with me. If we end up with more than 3 people, we will add cars. Tickets are \$7.00 in advance

Looking forward to seeing you all at the next meeting at Marie Callenders.

Grant Sweer

**SANTA CLARITA VALLEY GARDEN RAILROAD CLUB**  
**Serving the Santa Clarita and San Fernando Valley’s in California**

24403 Zermatt Lane, Valencia, CA 91355

President:	Grant Sweer	661-513-0378	661-220-9831	sweer04@yahoo.com GrantSweer@woodward.com
Events & Social Chair	Martie Smith Carla Breitner	661-259-9618 818-992-6377	661-373-4236 310-880-1369	marthsmith2006@sbcglobal.net carlabb@earthlink.net
Photographer	Carla Breitner	818-992-6377	310-880-1369	carlabb@earthlink.net
Newsletter /Communications	Alan Wright Gary Woolard Carla Breitner Jim Cary	661-287-0026 818-992-6377 818-504-0200	818-416-7173 310-880-1369	wwright735@gmail.com garish@earthlink.net jcary@morningglowrr.com

## 2016 Santa Clarita Valley Garden Railroad Club Meetings & Events

SCVGRC Meeting	25-Jan-16	06:30 PM	Marie Callendar's	
SCVGRC Meeting	29-Feb-16	06:30 PM	Marie Callendar's	
SCVGRC Meeting	28-Mar-16	07:00 PM	TBD	
SCVGRC Meeting	25-Apr-16	07:00 PM	Member Layout TBD	
SCVGRC Meeting at the Big Train Show	21-May-16	12:30 PM	Lunch during Big Train Show - Ontario	Spire's or Marie Callendar's
SCVGRC Meeting	27-Jun-16	07:00 PM	Alan & Donna Wright	
SCVGRC Meeting	25-Jul-16	07:00 PM	Member Layout TBD	
SCVGRC Meeting	29-Aug-16	07:00 PM	Member Layout TBD	
SCVGRC Meeting	26-Sep-16	07:00 PM	Member Layout TBD	
SCVGRC @ DEAFestival LA	1-Oct-16	11 AM - 4 PM	Downtown LA	
SCVGRC Meeting	24-Oct-16	07:00 PM	Jim & Sandi Owens	
SCVGRC Meeting	28-Nov-16	07:00 PM	Marie Callendar's	

### Call for Calendar Submissions

by Carla Brand Breitner

It's time to grab a meeting date to show off your layout/train collection/latest project to an audience of interested club members. Alan and Donna Wright have invited the club to see the changes in the Valentine & Heartland RR on June 27. Jim and Sandi Owens have pencilled the club in for a Halloween treat (or trick) on October 24. Dates in April, July, August and September are open. If you would like to host the club during those months, let me know at 818-992-6377 or by email at carlab@earthlink.net. Meetings can be as shown above on the last Monday of the month... or choose a weekend day and host the club for an afternoon of running trains.

The Big Train Show in Ontario has changed their dates from the first weekend in June to the weekend before Memorial Day. Seems like a good time and place for club members to meet, so we've pencilled in lunch on Saturday, May 21 at a nearby restaurant at 12:30 pm. There are at least two choices within walking distance of the entrance.

Grant has pitched the Bay Area National Garden Railroad Convention 2016. Gary and I will add that they have remarkable layouts well worth the trip.

The Pacific Southwest Region of the National Model Railroad Association is having a Regional Meet based at the Doubletree Inn in Culver City between September 21 and 25, 2016. NMRA meets feature all-scale layouts, modelers of exceptional talent, clinics and vendors. There are also some interesting field trips on their schedule.

Our club has been invited back to DEAFestival LA on October 1, so mark your calendar to help out and introduce our hobby to new folks. They've even promised to give us two more tables to play on!

I'll be looking for railroad-related events to add to our schedule as field trips and excursions throughout the year. Please let me know if there are rail-related places in the greater LA area you would like to see and I'll try to arrange a tour for the club. Let's spend 2016 enjoying our railroad hobby!

## 2016 Railroad Related Events of interest to SCVGRC Members

<b>Great Train Show All Scale</b>	30-Jan-16	31-Jan-16			Orange County Fairgrounds, Costa Mesa	greattrainexpo.com
Fairplex Garden RR Public Run	14-Feb-16		11 AM - 4 PM		Fairplex Gate #1, Pomona	fgrr.org
<b>Great Train Show All Scale</b>	13-Feb-16	14-Feb-16			Del Mar Fairgrounds	greattrainexpo.com
Fairplex Garden RR Public Run	14-Mar-16		11 AM - 4 PM		Fairplex Gate #1, Pomona	fgrr.org
Fairplex Garden RR Public Run	11-Apr-16		11 AM - 4 PM		Fairplex Gate #1, Pomona	fgrr.org
Orange Empire Rail Festival	16-Apr-16	17-Apr-16	10 AM - 5 PM		Perris	oerm.org
Staver Spring Steam Up	21-Apr-16	24-Apr-16			Portland	staverlocomotive.com
Fullerton Railroad Days	30-Apr-16	1-May-16			Fullerton Metrolink Station	scrpa.net
Fairplex Garden RR Public Run	9-May-16		11 AM - 4 PM		Fairplex Gate #1, Pomona	fgrr.org
<b>Bus Tours Big Train Show</b>	19-May-16	20-May-16			Ontario Convention Center	bigtrainshow.com
<b>Big Train Show</b>	21-May-16	22-May-16			Ontario Convention Center	bigtrainshow.com
Fairplex Garden RR Public Run	13-Jun-16		11 AM - 4 PM		Fairplex Gate #1, Pomona	fgrr.org
<b>32nd NGRC - Bay Area</b>	4-Jul-16	11-Jul-16			Santa Clara	ngrc2016.com
Fairplex Garden RR Public Run	11-Jul-16		11 AM - 4 PM		Fairplex Gate #1, Pomona	fgrr.org
National Summer Steamup	13-Jul-16	17-Jul-16			Sacramento	summersteamup.com
Staver Fall Steam Up	15-Sep-16	18-Sep-16			Portland	staverlocomotive.com
<b>NMRA Convention</b>	22-Sep-16 24-Sep-26				Culver City	psrconvention.org/lajunction
So Cal Model RR List	25-Sep-16				Open Houses	
Fairplex Garden RR Public Run	10-Oct-16		11 AM - 4 PM		Fairplex Gate #1, Pomona	fgrr.org
Ghost Train LA Live Steamers	13-Oct-16	29-Oct-16	Weekends		Griffith Park	lals.org
Fairplex Garden RR Public Run	14-Nov-16		11 AM - 4 PM		Fairplex Gate #1, Pomona	fgrr.org
Fairplex Garden RR Public Run	12-Dec-16		11 AM - 4 PM		Fairplex Gate #1, Pomona	fgrr.org



## DENVER THEN & NOW - PART 2

### Dave & Jean Gross' San Miguel Southern

by Gary Woolard & Carla Breitner  
Photos by Carla Brand Breitner

When we visited Dave & Jean Gross' San Miguel Southern during last year's NGRC, we learned that Marc Horovitz was interested in getting an article about the layout -- so you might see it in the pages of an upcoming issue.

This layout is a good candidate for a "Then and Now" examination.

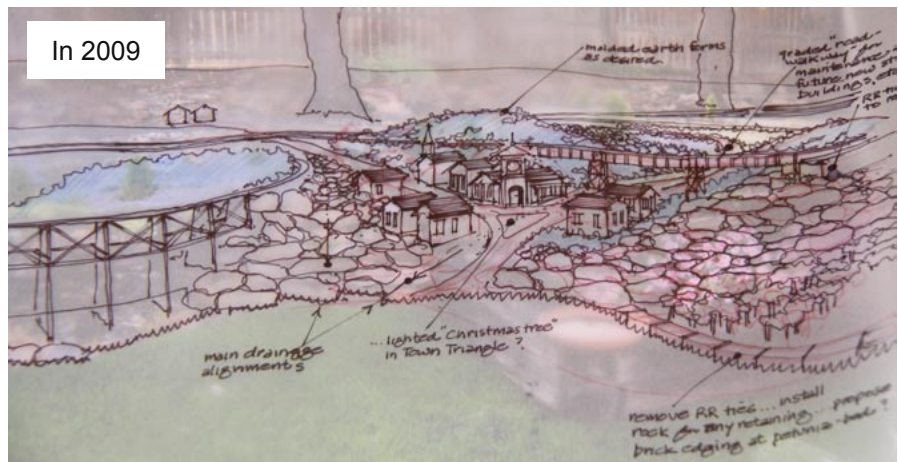


When we first visited the layout during the 2009 convention, there was a sketch in the petunia bed announcing changes to come...

and it's pretty clear that some things changed as planned, some things stayed the same, and some things... are similar yet different.

The difference is obvious -- there are more buildings, a lot more rock work, and less ground cover on the layout by 2015. The railroad ties were replaced with rock as needed. The drainage under the trestle was improved, some track rerouted, but the planned village became pastureland instead. (That's Dave Gross in the orange shirt standing by his curved trestle in the bottom picture.) The sharper contour of a canyon increases the drama of the trestle, making it a focal point for the railroad.

The layout runs, as near as I can judge, along a roughly north-south axis, on sloping ground along a





## DENVER THEN & NOW - PART 2 continued

fence. Here are two similar shots; each from under the umbrella which protects the control station at the south end of the layout. You'll notice the brown farmhouse in the foreground moved to make room for the new canyon. The far tree along the fence has been removed, allowing the point-to-point line along the fence to extend the full length of the layout.

A large stone catches your eye at the far end, inscribed with the layout's name. It hasn't moved in the last five years, so it makes a good visual anchor. Here's that area in 2009 --



Note the coal tipple in front of that retaining wall.

Now, in 2015, a large mining structure has appeared on the slope above the mine tipple. That mill is now the northern terminus of the p-to-p line.



New rock work at the base of the fence replaced the 2009 mulch slopes behind the p-to-p line.





## DENVER THEN & NOW - PART 2 continued

We'll zoom in a bit more to the north so you can get a better view of the engine house and church. The boys in the Engine House added a Machine Shop near the Water Tower and are busy in the yard in 2015. Meanwhile the fire station has been moved, probably to be nearer to the town center. (Hope it didn't burn down!)

Below is the switchyard at the south end of the layout. In 2015, you can see the p-to-p running right under the fence.



In 2009



In 2009



In 2015



In 2015



There's a lot more detail to be seen on this layout than we have time for today; but there's just a bit more eye-candy to whet your appetite on the next page.



# DENVER THEN & NOW - PART 2 continued

In 2009



In 2009



In 2015



In 2015



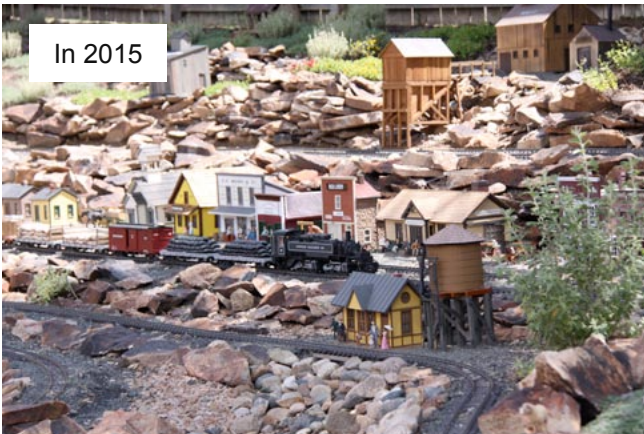
In 2009



In 2009



In 2015



In 2015





## SANTA CLARITA VALLEY RAILROAD HISTORY

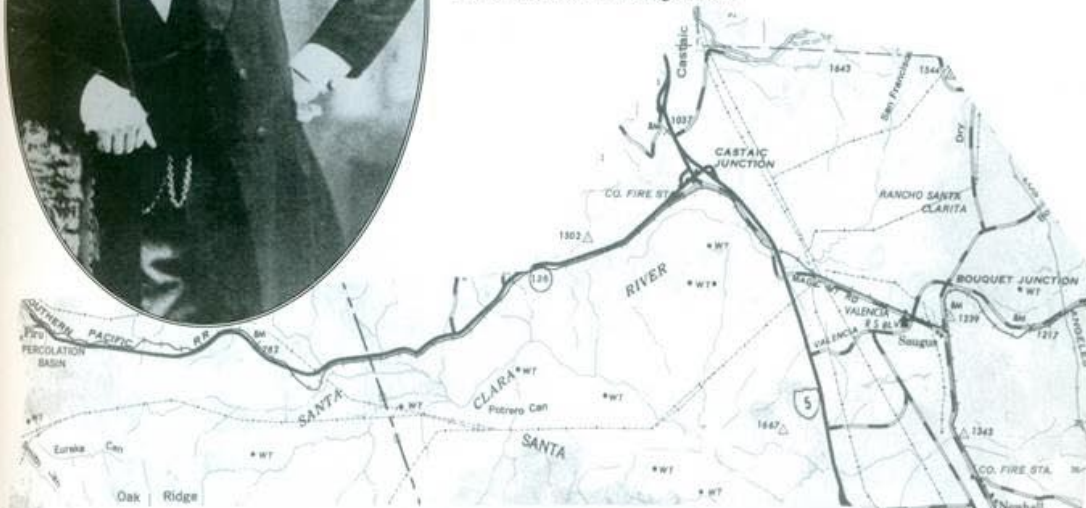
The Santa Clarita Valley is rich with lots of early western history including mining, oil, ranching and a crossroads for connecting the Los Angeles area with the mountains and central valley to the north. Railroads played a vital part when after 1876 a mile and a quarter tunnel was opened. This tunnel is still in use by the Union Pacific RR & Metrolink. *The following is from the book "Santa Clarita Valley Pictorial History 1876—1926" published in cooperation with the Santa Clarita Valley Historical Society by Sierra Vista Publishing 2000.*

### Henry Mayo Newhall

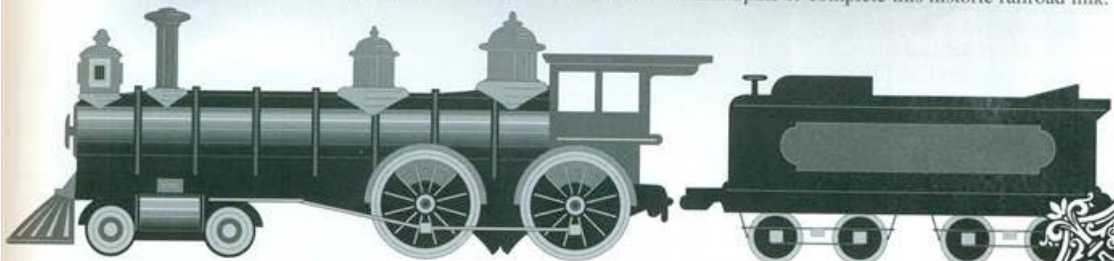


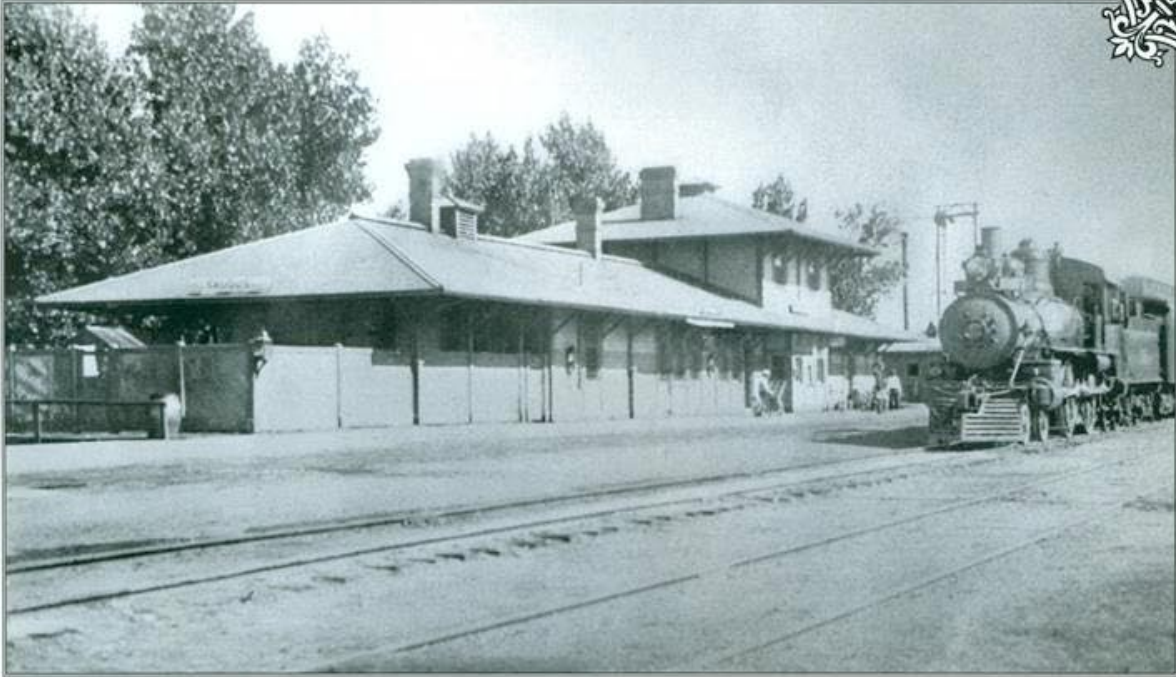
**H**enry Mayo Newhall was born in Saugus, Massachusetts, on May 13, 1825. At age 25, Newhall headed for California in hopes of finding gold. From 1872 to 1875, Newhall purchased five old land grant ranchos. One of them, Rancho San Francisco, was a 48,000-acre area located in the Santa Clara River Valley.

**O**ne morning, shortly after the railroad was completed, Mr. Newhall took a leisurely horse ride over the oak-studded hills. Along the way the animal stumbled and sent Newhall headfirst into the grass. Newhall was taken to his home in San Francisco, where he died on March 13, 1882, at the age of 56.



**T**he railroad had started pushing through in 1875. A tunnel had to be built in order for the rails to reach the Santa Clarita Valley from Los Angeles. On March 22, 1876, Chinese laborers stood ready to work on the tunnel with shovels in hand. A year and a half later, the digging was complete. This was known as the San Fernando Tunnel. At the time, it was the third longest tunnel in the U.S., at 6,940 feet in length. Soon thereafter Northern and Southern California came together at Lang Station, in Canyon Country. Southern Pacific President Charles Crocker drove the Golden Spike to complete this historic railroad link.





*This is one of the earliest pictures taken of the Saugus Station.*

**T**he first station agent was Alexander Isaac Fraser. His wife, Margaret Fraser, gave birth to their daughter, Christine, on June 2, 1890, on the second floor of the new depot, in the station agent's living quarters. Inside the station was a restaurant, Tolfree's Saugus Eating House. It was the only known place to serve food to hungry travelers for miles around.



*McKeen gasoline powered engine, Galloping Goose. This photo was taken at the Saugus Station in 1924.*



*Two men greet each other on the platform of the Saugus Station.*